

**Smad1 Antibody**  
**Rabbit mAb**  
**Catalog # AP90872****Specification**

---

**Smad1 Antibody - Product Information**

Application	WB, IHC, FC, ICC
Primary Accession	<a href="#">Q15797</a>
Clonality	Monoclonal
<b>Other Names</b>	
MAD homolog 1; Mothers against DPP homolog 1; JV4-1; Mad-related protein 1; SMAD family member 1; SMAD 1; Smad1; hSMAD1; BSP-1; SMAD1; BSP1; MADH1; MADR1;	
Isotype	Rabbit IgG
Host	Rabbit
Calculated MW	52260 Da

**Smad1 Antibody - Additional Information**

Dilution	WB~~1:1000 IHC~~1:100~500 FC~~1:10~50 ICC~~N/A
Purification	Affinity-chromatography
Immunogen	A synthesized peptide derived from human Smad1
Description	Transcriptional modulator activated by BMP (bone morphogenetic proteins) type 1 receptor kinase. SMAD1 is a receptor-regulated SMAD (R-SMAD). SMAD1/OAZ1/PSMB4 complex mediates the degradation of the CREBBP/EP300 repressor SNIP1;
Storage Condition and Buffer	Rabbit IgG in phosphate buffered saline , pH 7.4, 150mM NaCl, 0.02% sodium azide and 50% glycerol. Store at +4°C short term. Store at -20°C long term. Avoid freeze / thaw cycle.

**Smad1 Antibody - Protein Information****Name** SMAD1**Synonyms** BSP1, MADH1, MADR1**Function**

Transcriptional modulator that plays a role in various cellular processes, including embryonic development, cell differentiation, and tissue homeostasis (PubMed:<a href="http://www.uniprot.org/citations/9335504" target="\_blank">9335504</a>). Upon BMP

ligand binding to their receptors at the cell surface, is phosphorylated by activated type I BMP receptors (BMPRIIs) and associates with SMAD4 to form a heteromeric complex which translocates into the nucleus acting as transcription factor (PubMed:<a href="http://www.uniprot.org/citations/33667543" target="\_blank">33667543</a>). In turn, the hetero-trimeric complex recognizes cis-regulatory elements containing Smad Binding Elements (SBEs) to modulate the outcome of the signaling network (PubMed:<a href="http://www.uniprot.org/citations/33667543" target="\_blank">33667543</a>). SMAD1/OAZ1/PSMB4 complex mediates the degradation of the CREBBP/EP300 repressor SNIP1. Positively regulates BMP4-induced expression of odontogenic development regulator MSX1 following IPO7-mediated nuclear import (By similarity).

#### Cellular Location

Cytoplasm. Nucleus Note=Cytoplasmic in the absence of ligand. Migrates to the nucleus when complexed with SMAD4 (PubMed:15647271). Co-localizes with LEMD3 at the nucleus inner membrane (PubMed:15647271). Exported from the nucleus to the cytoplasm when dephosphorylated (By similarity) {ECO:0000250|UniProtKB:P70340, ECO:0000269|PubMed:15647271}

#### Tissue Location

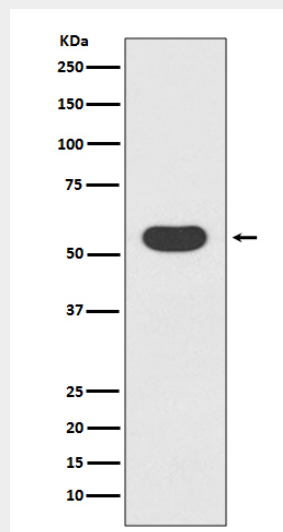
Ubiquitous. Highest expression seen in the heart and skeletal muscle

#### Smad1 Antibody - Protocols

Provided below are standard protocols that you may find useful for product applications.

- [Western Blot](#)
- [Blocking Peptides](#)
- [Dot Blot](#)
- [Immunohistochemistry](#)
- [Immunofluorescence](#)
- [Immunoprecipitation](#)
- [Flow Cytometry](#)
- [Cell Culture](#)

#### Smad1 Antibody - Images



Western blot analysis of Smad1 expression in 293T cell lysate.